

Two New Species of *Spilomyia* Meigen

(Syrphidae : Diptera)

J. L. NAYAR AND F. R. COLE

University of California, Berkeley

Two species of *Spilomyia* from North America were in the California Insect Survey Collections under the names of *S. longicornis* Loew and *S. interrupta* Williston but are described below as new for these have many distinguishing characters that necessitate their being worthy of specific names.

Spilomyia banksi Nayar and Cole, new species

(Figs. 1 and 2)

Small, black, third and fifth yellow cross bands interrupted, the fifth abdominal segment entirely black.

FEMALE.—Length, 15.00 mm. Wing length, 10.00 mm. Eyes brownish with black spots which coalesce to form long broad line along posterolateral borders and an interrupted small line anteriorly. Head black, frons and face yellow; the former with inverted bell-shaped, median black marking, the latter with broad, median blackish-brown stripe; vertex brown; ocellar triangle area black with brownish ocelli; genae with brownish hue anteroventrally; pubescence on frons, vertex and occiput areas mostly black, silvery yellow on face. Face in profile without frontal tubercle, lower margin of the head horizontal. Antennae brownish, third segment rather blackish-brown; terminal segment longer than basal or second segment; arista yellowish, about length of antenna; small, sharp, black bristles on scape and pedicel, flagellum dusted black.

Thorax black dorsally, posterior half of humeri, adjacent quadrangular spot, triangular spot in antero-notopleural area, small rounded spot inner to triangular mark, curved vitta extending upwards from posterior callus to transverse suture, terminating anteromedially in silvery pollinose stripe, inverted V in front of scutellum yellow; pleura black with five large yellow spots, one above procoxa, two in mesepisternum, one in mesepimeron, one in metapleuron; basal spots in meso- and metapleural areas almost coalescing in linear row. Small black pubescence on blackish parts of thorax, yellow hair on yellow areas. Wings brownish from base to apex along anterior margin to ending of R_{4+5} , rest of wing hyaline; lower part of radial sector darkish to radio-medial cross-vein. Squamae silvery white with long brownish fringe, halteres light brown.

Legs mostly yellow, mid and hind legs entirely yellow from coxae to pulvilli, tips of claws black; forelegs, coxae, trochanters, femora and basal part of tibiae yellow, with remaining parts brownish-black. Pile yellow on yellow areas, black on black parts, black pubescence on under surface of hind femur and triangular, yellow spur-like structure from lower part of hind femur projecting downwards and outwards.

Abdomen with first segment black, broadly yellow antero-laterally; segments two to four black, each with two yellow bands; basal band on the second segment and posterior bands of all three segments entire, third and fifth bands interrupted

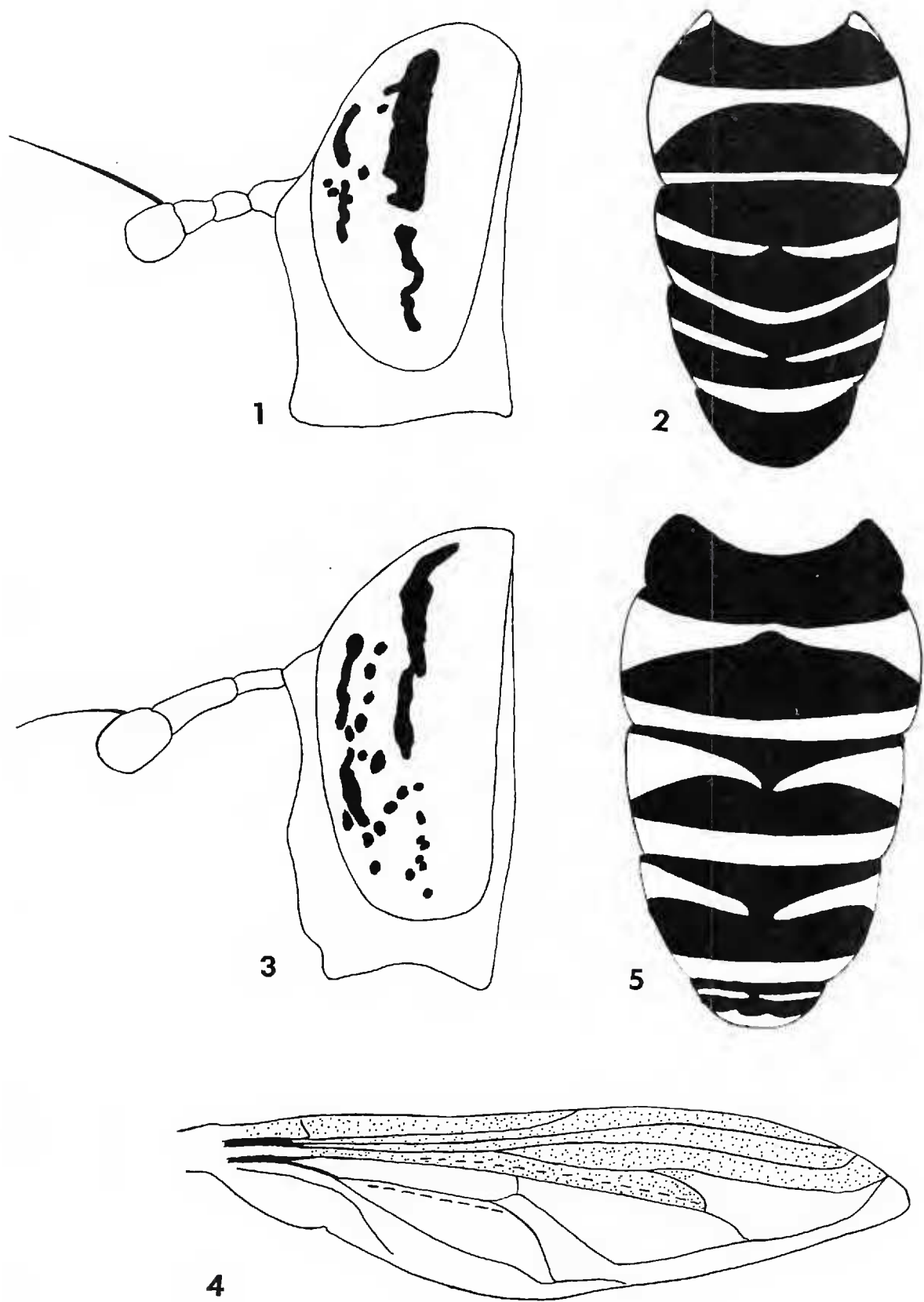


FIG. 1. *Spilomyia banksi* sp. n. Head (lateral view). FIG. 2. *Spilomyia banksi* sp. n. Abdomen (dorsal view). FIG. 3. *Spilomyia oregonensis* sp. n. Head (lateral view). FIG. 4. *Spilomyia oregonensis* sp. n. Wing. FIG. 5. *Spilomyia oregonensis* sp. n. Abdomen (dorsal view).

in middle. Bands of third tergite similar to those of fourth, except apical band in the latter thicker than the former. Fifth segment black with long black pile. Pile long yellow along lateral borders of first and second segments, small yellow on yellow bands, black pubescence on black areas with black hairs on medio-posterior border of third segment and posterior band of fourth segment.

Holotype Female.—GREAT FALLS, VIRGINIA, 3 October 1915 (N. Banks), from the California Insect Survey Collection, University of California, Berkeley; to be deposited in the California Academy of Sciences.

The species bears resemblance to *S. interrupta* Williston in the yellow markings of the thoracic terga and pleura but stands distinct by its first yellow band on the second abdominal segment being broad and entire and the fifth segment entirely black. In *interrupta*, there are a pair of yellow bands on the fifth segment.

***Spilomyia oregonensis* Nayar and Cole, new species**
(Figs. 3, 4 and 5)

Robust, black, third and fifth yellow cross bands interrupted, wide black area between yellow meso- and metapleural markings.

FEMALE.—Length, 17.33 mm. Wing length, 12.00 mm. Eyes yellowish, with thick brownish border and black spots almost arranged in three vertical rows; spots coalescing in outer and inner rows. Frons with thick, median black stripe, lateral areas yellow and face with narrow, black median vitta. Vertex, ocellar triangle and genal areas black; ocelli light brown. Pubescence yellowish on yellow parts and blackish on black stripes of head. Face in profile with small frontal prominence, lower margin of head arched inwards. Antennae yellowish-brown; apical part of third segment rather deep brown; second segment longer than scape or flagellum; arista brownish, about half length of antenna; small black bristles on basal and second segment, flagellum dusted silvery-grey.

Thoracic dorsum black, the following yellow: posterior part of humerus, adjacent triangular spot, irregular spot on anteronotopleural area, triangular spot anterolateral to transverse suture, C-shaped stripe with silvery ending running anteriorly from post-callus to transverse suture, inverted V in front of scutellum, and posterolateral borders of scutellum. Pleura black with four large and one small yellow spots: one above procoxa, two in katmesepisternum (anterior large and posterior small), one in anmesepisternum and one in metapleuron; basal spots in meso- and metapleural areas wide apart. Small, black hairs on black parts of terga and pleura, yellow pubescence on yellow parts.

Wings dusted sharply brownish from base to apex, apically in front of R_{4+5} , medially to joining of r-m with media, rest of wing hyaline. Squamae silvery yellow with concolorous long fringe and halteres brownish-yellow.

Legs mostly yellow, pro and mid coxae blackish-brown, hind coxae black with yellow hue, trochanter of anterior and posterior legs brownish; distal half of tibia and tarsus black in foreleg, hind leg from femur to tip, mid-leg from trochanter to pulvilli, and fore-leg from femur to basal half of tibia yellow. Small black pubescence to silvery dust on black parts, fine yellow pubescence on yellow

areas, small sharp black bristles on under surface of hind femur and triangular yellow spur-like structure on lower part of same.

Abdomen black, first tergite with extreme lateral border yellowish; tergites two to five, each with two yellow bands, one sub-basal and one apical. First, second, fourth, sixth and eighth bands entire; third, fifth and seventh bands interrupted in middle. First, third and fifth bands broadened laterally, rest of bands uniformly wide. Sub-basal and apical bands narrowly confluent in lateral borders of second and third segments but markedly separate in fourth and fifth segments. Black pubescence on black areas and yellow on yellow markings except black pubescence on median and posterior margin of sixth band and all over on eighth band.

Holotype Female.—MARY'S RIVER, OREGON, 9 September 1917 (Mecham), from the California Insect Survey Collection, University of California, Berkeley; to be deposited in the California Academy of Sciences.

This species comes close to *S. liturata* Williston in the yellow markings of the thoracic tergum but can be easily distinguished by the first yellow band being entire and by a yellow spot present in the mesepisternum. In *S. liturata* the pteropleuron is entirely black and the first band widely interrupted in the middle.

**A New Species of Aphid from *Rubus*
parviflorus in California**
(Homoptera : Aphididae)

ALEX R. HILL

Zoology Department, The University, Glasgow, Scotland

Some years ago (Hill, 1962) help was requested from entomologists in North America in obtaining further specimens of a new species of aphid from *Rubus parviflorus* Nutt. to which my attention had been drawn by Dr. R. Stace-Smith of Vancouver (Hill, 1958). In 1964, Dr. Hille Ris Lambers sent me examples which he had collected from *R. parviflorus* at Berkeley and San Francisco, California, in 1963. On examination, however, these were found not to be of the species in question but of yet another new species.

***Amphorophora pacifica* Hill, new species**

ALATE VIVIPARA.—(N = 13). Color, shiny very pale greenish white. Wings clear without dusky apical spot; the veins show no dark borders. Body length 2.49–3.1 mm; width across abdomen 1.05–1.28 mm; width of head across eyes .48–.55 mm. Antennal length 3.3–3.8 mm; III, .66–.86 mm, with 14–20 round rhinaria arranged linearly along $\frac{7}{8}$ of the length of the segment; IV, .59–.71 mm;